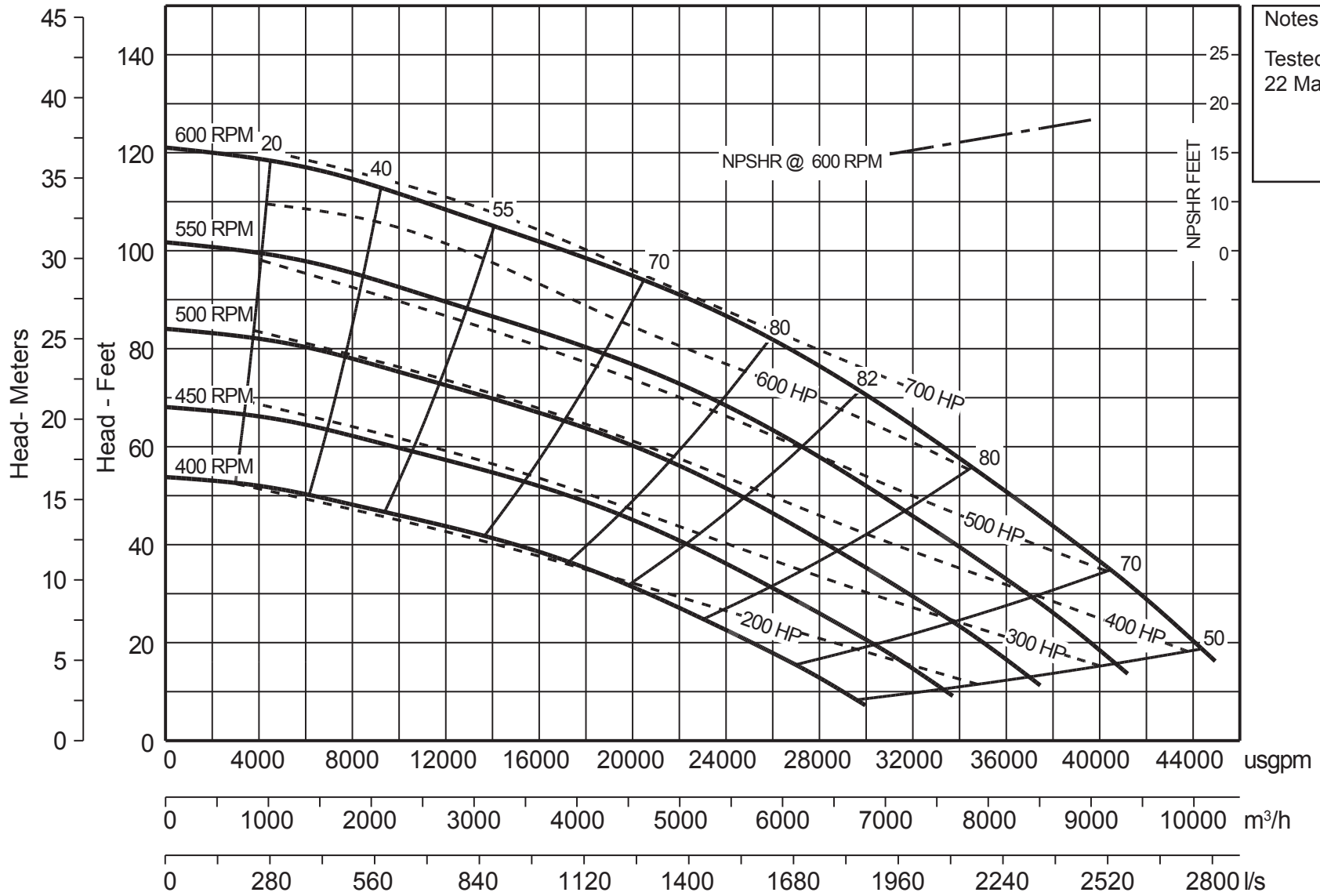


Note: Losses from priming system not shown



Notes:
Tested
22 May 2013



Model	PP3030S34	
Size	30 x 30"	760 mm x 760 mm
Impeller Diameter	34.5"	870 mm
Solids Handling Size	5.9"	150 mm

DWG No. A12404HQ
Revision 000
Drawn By BC
Date 6 Jun 2013