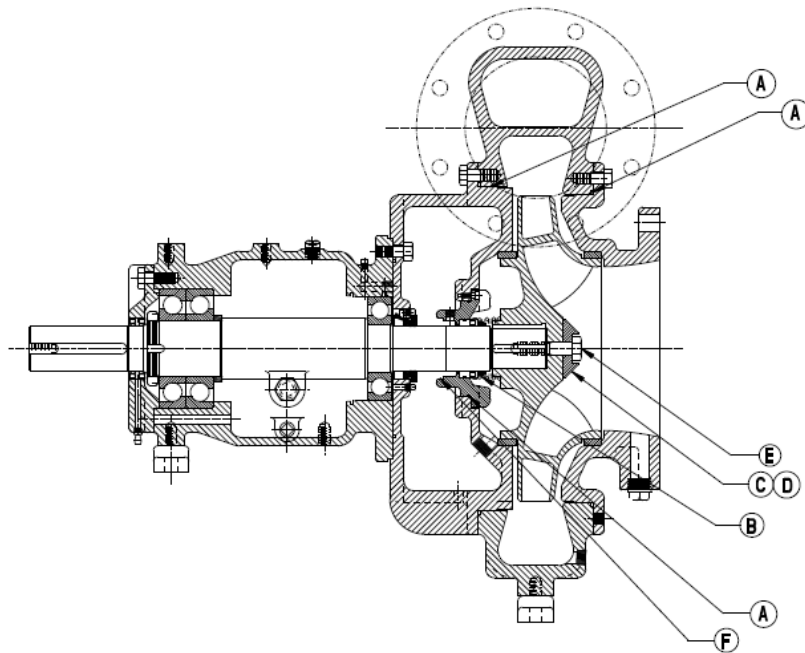


SERVICE PARTS KITS

PUMP MODEL: 108C18

The mechanical seal kit and bearing frame kits are offered separately. We recommend ordering both kits for a major service. Both the Mechanical Seal and Bearing Frame kits include all O-rings needed for service.

PARTS DRAWING – 372000144 MECHANICAL SEAL PARTS KITS



372000144 - Mechanical Seal Kit		
Qty.	Kit No.	Description
1	A	O-RING KIT, COMPLETE
1	B	MECHANICAL SEAL
1	C	IMPELLER LOCK WASHER
1	D	TONG WASHER
1	E	IMPELLER SCREW
1	F	CASSETTE SEAL TSS 2.50"SH X 2

ORDERING INFORMATION

Most parts kits are in stock and available for shipment within 2 business days. You must have an active Franklin Electric account for order processing. Email orders to PartsSales@pioneerpump.com. For questions, please call Pioneer Pump at (503) 266-4115 or email us at the above email.

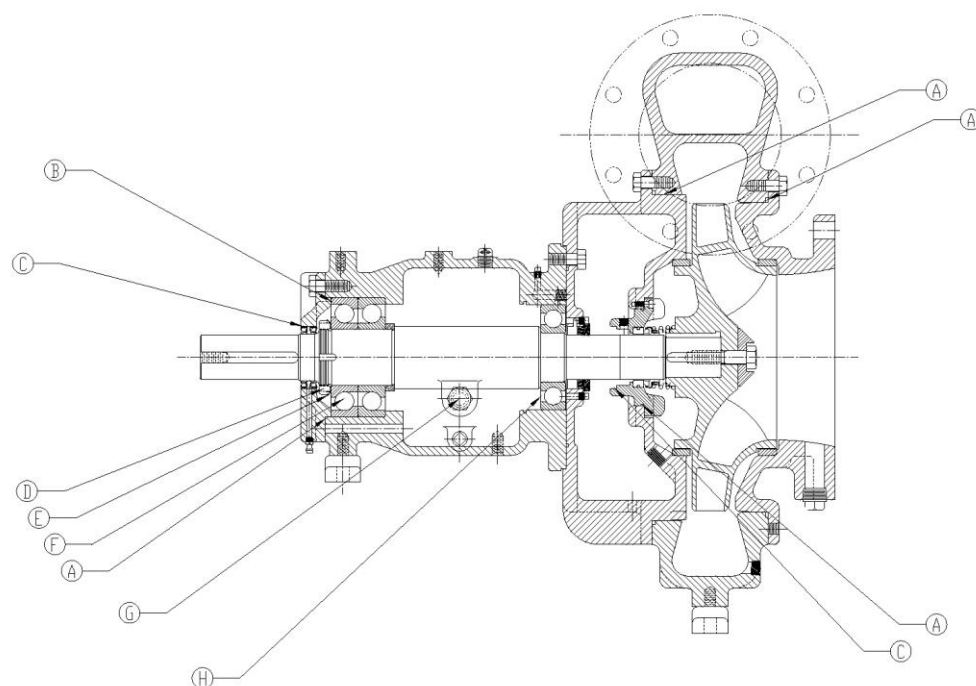
NOTE: Part numbers listed reflect updated part numbers as of July 2022. Older documentation may have different part numbers. Please consult factory if differences appear. All parts included in kits are standard material. Please contact Pioneer Pump for any special requests regarding the material of component.

SERVICE PARTS KITS

PUMP MODEL: 86C17/108C18

The mechanical seal kit and bearing frame kits are offered separately. We recommend ordering both kits for a major service. Both the Mechanical Seal and Bearing Frame kits include all O-rings needed for service.

PARTS DRAWING – 373000140 BEARING FRAME KIT



373000140- BEARING FRAME KIT		
Qty.	Kit No.	Description
1	A	O-RING KIT COMPLETE
1	B	SHIMS KIT COMPLETE
1	C	CASSETTE SEAL KIT COMPLETE
1	D	NUT
1	E	WASHER
2	F	OUTBOARD BEARING
1	G	PLUG
1	H	INNER BEARING

ORDERING INFORMATION

Most parts kits are in stock and available for shipment within 2 business days. You must have an active Franklin Electric account for order processing. Email orders to PartsSales@pioneerpump.com. For questions, please call Pioneer Pump at (503) 266-4115 or email us at the above email.

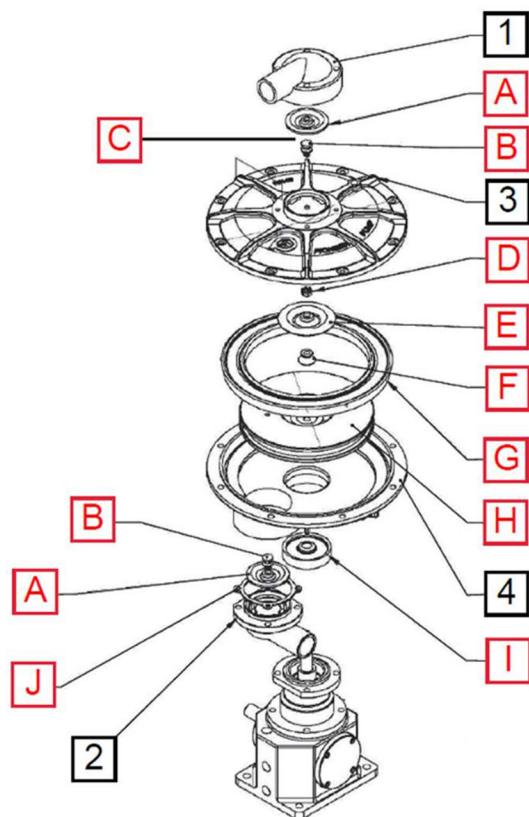
NOTE: Part numbers listed reflect updated part numbers as of July 2022. Older documentation may have different part numbers. Please consult factory if differences appear. All parts included in kits are standard material. Please contact Pioneer Pump for any special requests regarding the material of component.



VACUUM PUMP REBUILD

UPPER CHAMBER KIT

PARTS DRAWING – 374000102 UPPER VACUUM PUMP KIT



374000102 – UPPER VACUUM PUMP KIT		
Qty.	Id	Description
2	A	INLET/EXHAUST VALVE
2	B	INLET/EXHAUST VALVE STUD
1	C	COTTER PIN
1	D	CASTLE NUT
1	E	ACTUATOR VALVE
1	F	ACTUATOR WASHER
1	G	ACTUATOR SEAL
1	H	ACTUATOR
1	I	NECK SEAL
1	J	INLET NOZZLE GASKET
8	-	HOUSING FASTENER
1	-	FLAT WASHER

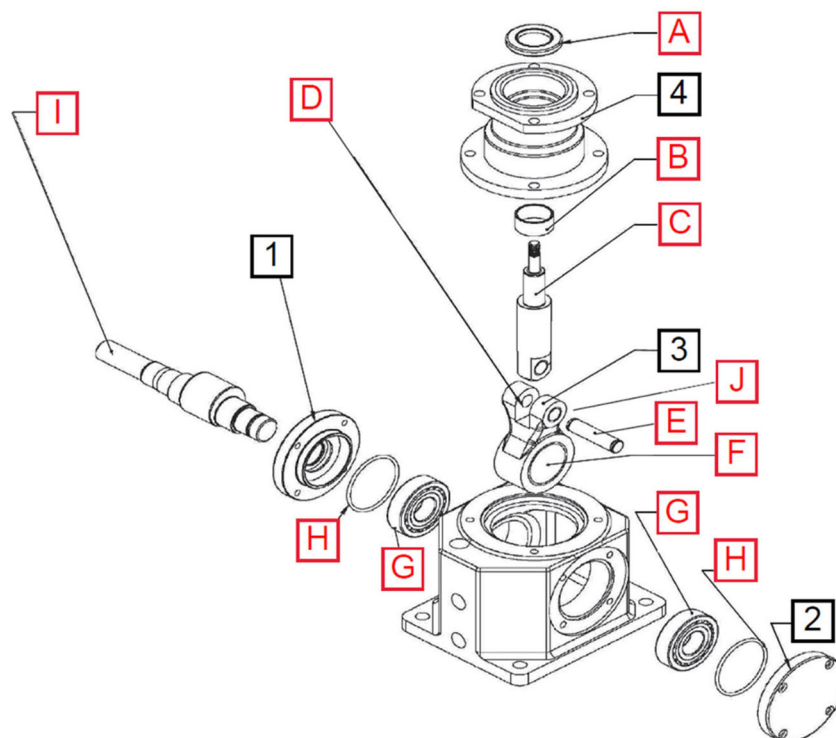
NOT INCLUDED IN KIT		
Id	Description	Part No.
1	EXHAUST NOZZLE	33617320
2	INLET NOZZLE	33617318
3	UPPER HOUSING	33617310
4	LOWER HOUSING	33617309



VACUUM PUMP REBUILD

LOWER CHAMBER KIT

PARTS DRAWING – 374000103 LOWER VACUUM PUMP KIT



374000103 – LOWER VACUUM PUMP KIT

Qty.	Id	Description
1	A	ACTUATOR SHAFT LIP SEAL
1	B	ACTUATOR SHAFT GUIDE BUSHING
1	C	ACTUATOR SHAFT WITH BUSHING
2	D	CONNECTING ROD BUSHING, SMALL
1	E	FULCRUM PIN
1	F	CONNECTING ROD BEARING, LARGE
2	G	SHAFT END BEARING
2	H	BEARING CAP O-RING
1	I	CRANK SHAFT
1	J	FULCRUM PIN RETAINING RING
1	-	BEARING LOCKNUT
1	-	BEARING LOCKWASHER
1	-	BEARING CAP LIP SEAL
1	-	PEDESTAL O-RING
1	-	THUMBSCREW
4	-	STUD ASSEMBLY

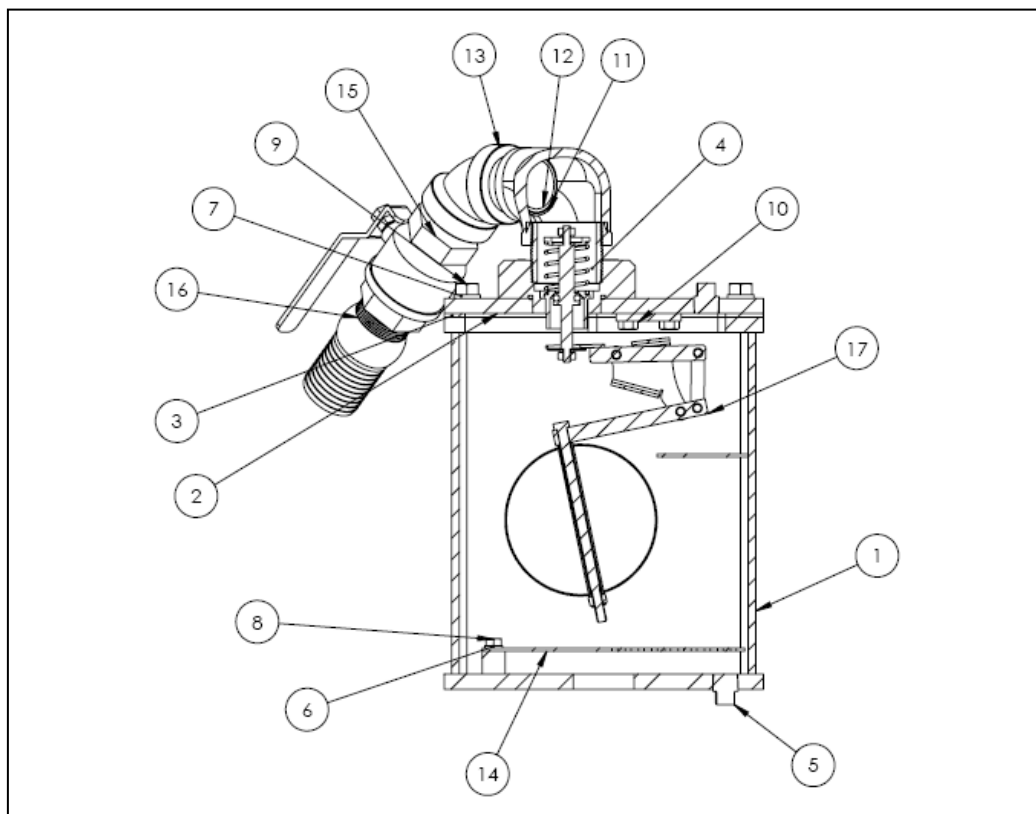
NOT INCLUDED IN KIT

Id	Description	Part No.
1	BEARING CAP, SHAFT END	33602316
2	CONNECTING ROD	33603314
3	PEDESTAL	33601312
4	BEARING CAP, REAR	33602317



PRIMING CHAMBER

SUBASSEMBLIES (STANDARD BUILD)

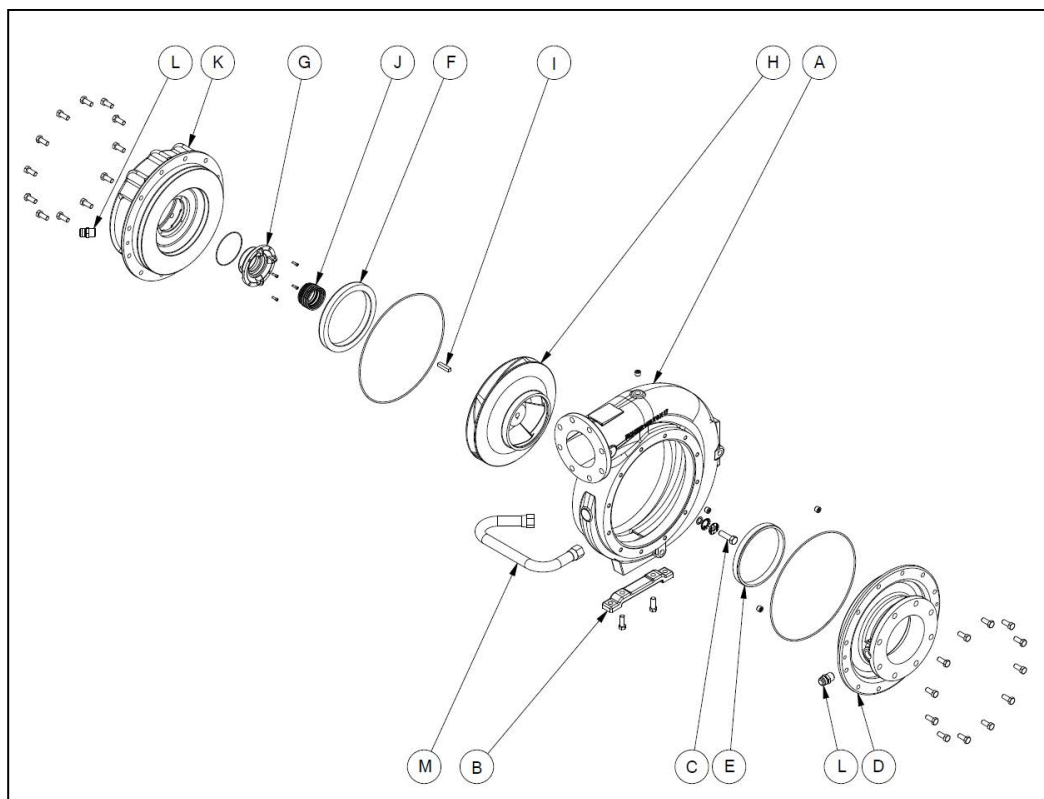


Item #	Id	Description
13156969	1	PRIMING CHAMBER
104157207	2	PRIMING CHAMBER LID
318486974	3	LID GASKET
106003704C	4	PRIMING VALVE SUB-ASSY
31138103	5	PIPE PLUG, ½ NPT SQUARE HEAD
37821213	6	.31 SPLIT LOCK WASHER
32839401	7	.50 SPLIT LOCK WASHER
37621031C075	8	BOLT, .31-18UNC x .75
32632050C125	9	BOLT, .50-13UNC x 1.25
37621038C062	10	BOLT, .38-16UNC x .63
30838110	11	ELBOW, 2" x 1-1/2" NPT, 90°
30638311	12	NIPPLE, 1-1/2", CLOSE
30838133	13	ELBOW, 1-1/2" NPT, 45°
102216896	14	STRAINER PLATE
32200102	15	BALL VALVE, 1-1/2"
31638104	16	KING NIPPLE, 1-1/2" MPT x 2" HO
1060016945	17	LINKAGE ASSY, GEN3 FIXED BALL



WET END PARTS

PUMP MODEL: 108C18 (STD. MATERIALS)

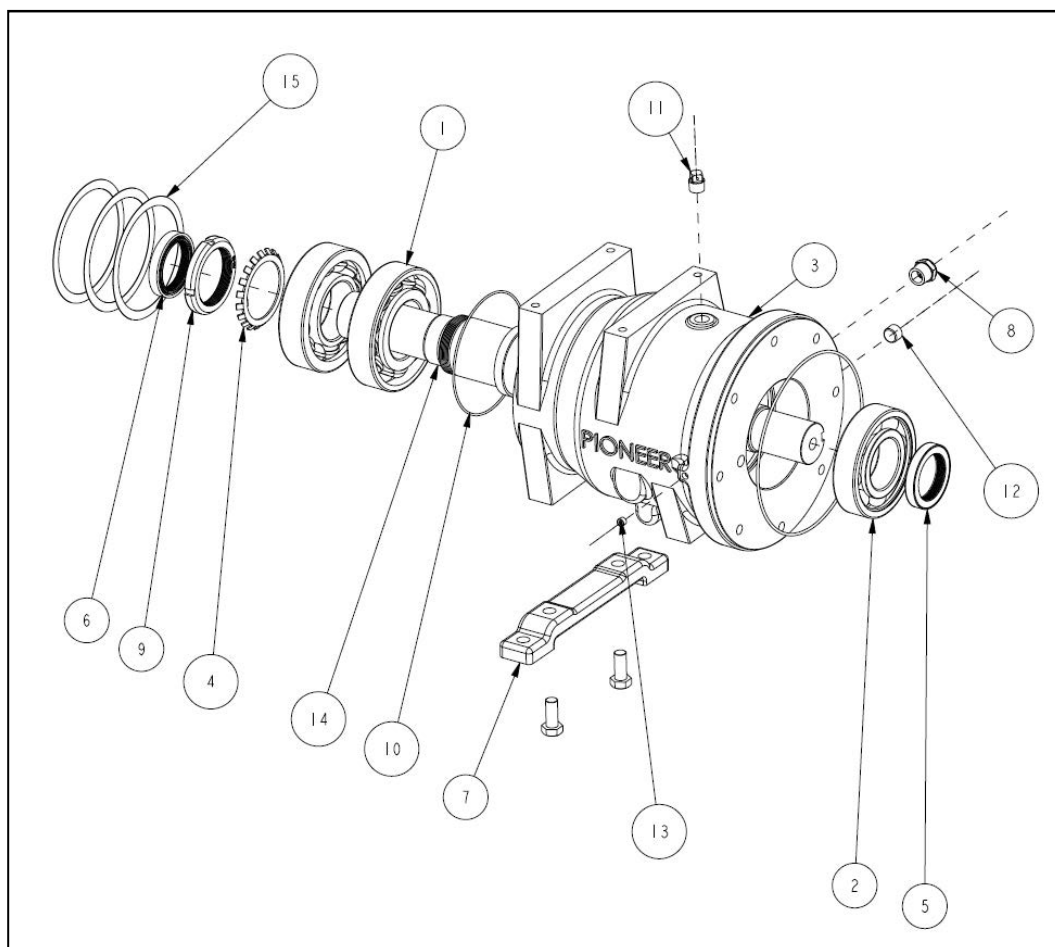


Qty	Id	Item #	Description
1	A	110046530	VOLUTE, DI
1	B	11904141	FOOT, MOUNTING
1	C	37500121	LOCK WASHER KIT .75-10 X 2.500
1	D	10804788	SUCTION COVER
1	E	109022458	SUCTION WEAR RING
1	F	109022458	HUB WEAR RING
1	G	129041436	SEAL GLAND
1	H	112301889	IMPELLER, FULL TRIM, CA6
1	I	12227112	KEY 1/2 x 1/2 x 2.50 LG
1	J	30400172	MECHANICAL SEAL, 2.50"
1	K	116046531	BRAC-PLATE, DI
2	L	34500127	FITTING, HOSE
1	M	34500405	BALANCE LINE HOSE



BEARING FRAME PARTS

PUMP MODELS: 86C17, 108C18, 1010C14

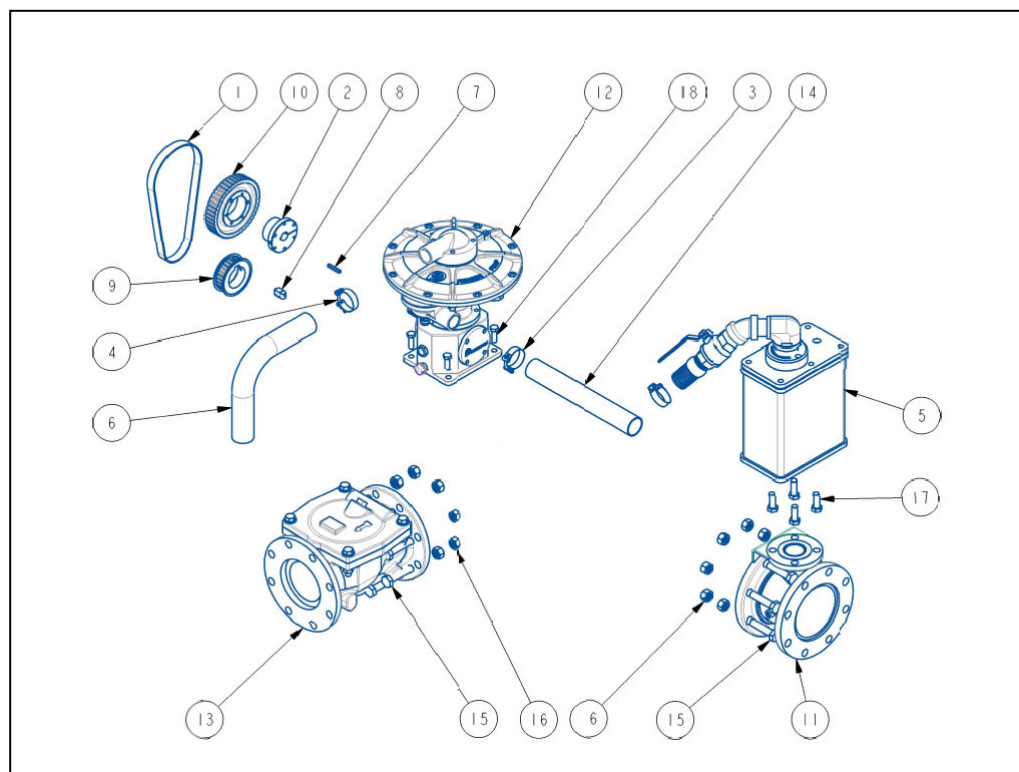


Qty	Id	Item #	Description
1	1	31900102	BEARING, IMPELLER END
2	2	31900201	BEARING, DRIVE END
1	3	11701131	BEARING HOUSING
1	4	32000103	BEARING WASHER
1	5	30500179	CASSETTE SEAL, 2.50"
1	6	30500176	CASSETTE SEAL, 2.625"
1	7	11904141	FOOT, MOUNTING
1	8	31339103	LEVEL PLUG 3/4" NPT
1	9	30500176	NUT, BEARING
1	10	KIT00201	O-RING SET, COMPLETE
1	11	31138922	VENT PLUG
1	12	31138107	PLUG, FLUSH 1/2" NPT
1	13	31138115	PLUG, FLUSH 1/8" NPT
1	14	1202714415	SHAFT
1	15	SHIM-BF2	SHIM KIT, BEARINGS



PRIMING SYSTEM

SIDE MOUNT, COMPACT, 10 X 8"



Qty	Id	Item #	Description
1	1	323360H100	BELT TIMING 420H100 (TOP MNT)
1	2	32500101	BUSHING QD/SK 1.0 BORE
1	3	31621103	CLAMP 2.5IN HOSE T-BOLT SS304
1	4	31621103	CLAMP 2.5IN HOSE T-BOLT SS304
1	5	1060015894	COMPACT PRIMING CHAMBER ASSY
1	6	31700103	HOSE 2IN X 90 DEG X 6IN LEG
1	7	12211103	KEY 1/4 x 1/4 x 1.75 LG
1	8	12211989	KEY 5/8 SQ WEDGE KEY
1	9	32400386	PULLEY 26H100 2.50"
1	10	32400102	PULLEY 44H100 QD/SK
1	11	1501510736	SPOOL PRIMING 10" W/ 2" WELDED
1	12	33600101	VACUUM PUMP 50CFM
1	13	32200106	VALVE 8" CHECK
1	14	31700130	HOSE 2" ID SUCTION x 48"
8	15	32632075C350	BOLT .75-11UNC x 3.50 G5 PLATED
8	16	37721601	NUT HVY HEX .75-11UNC 304SS
12	15.1	37621087C400	BOLT .88-9UNC x 4.00 G5 PLATED
12	16.1	37721801	NUT HVY HEX .88-9UNC 304SS
4	17	32632062C175	BOLT .62-11UNC x 1.75 G5 PLATED
4	18	32632050C150	BOLT .50-13UNC x 1.50 G5 PLATED



Franklin Electric is a global leader in the manufacturing and distribution of products and systems focused on the movement and management of water. We offer pumps, motors, drives, and controls for use in a wide variety of agricultural, commercial, industrial, municipal, and residential applications.
