

Wet Prime

PE3011L72



Performance

Wet prime centrifugal pump

Bare shaft, frame mounted, self-priming, heavy duty, solids handling pump

Size	3" x 3" 76 x 76 mm
Flow, Max	525 USgpm 120 m ³ /h 30 l/s
Head, Max	210 feet 60 meters
Flow at BEP	350 USgpm 80 m ³ /h 20 l/s
Efficiency at BEP	60%
Solids Handling, Max	0.88" 22 mm
Operating Speed, Max	2100 rpm
Suction Connection	3" (76 mm) 150 ANSI Flanges
Delivery Connection	3" (76 mm) 150 ANSI Flanges
Bearing Lubrication	Oil STD Grease Optional
Fasteners	Imperial

Applications

Petrochemical	Oil & Gas
Food Processing	Automotive/Steel
Paper & Pulp	

Heavy duty, self priming pump

These pumps offer unrivalled reliability through the use of high quality ductile iron castings and 17-4PH stainless steel shafts.

Options

- Stainless steel
- Electric driven
- Diesel driven
- V-Belt driven
- Natural gas engine

Other Specifications

Mechanical Seal	Single seal w/ tungsten carbide vs. silicon carbide seal faces, Viton® elastomers, 300 series stainless steel hardware and spring.
Pump End Bearing	Open Single Ball
Drive End Bearing	Open Double Ball
Shaft	17-4 PH Stainless Steel

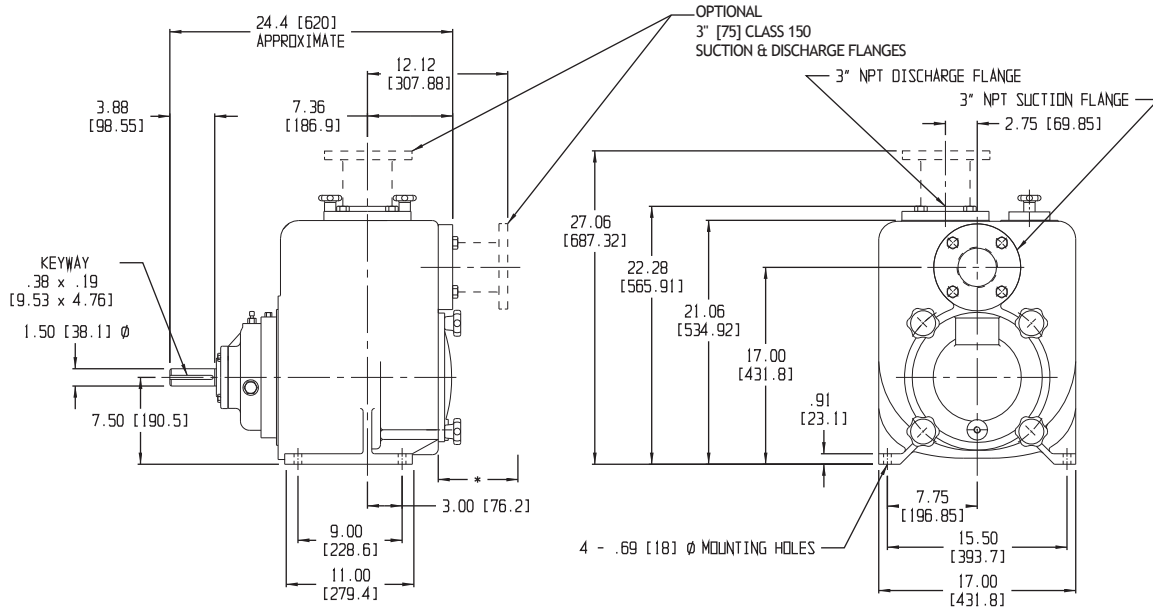
Construction Materials Options

	Standard Construction	CD4MCu Stainless Steel
		CD4MCu
Impeller	Ductile Iron ASTM A536 65-45-12	CD4MCu
Volute	Ductile Iron ASTM A536 65-45-12	CD4MCu
Wear Plate	Steel A36 Mild	316 SS
Seal Housing	ASTM A48 Class 30 Gray Iron	CD4MCu
Cover Plate	Ductile Iron ASTM A536 65-45-12	CD4MCu

Mechanical Dimensions



PE3011



Performance Curve

Model: PE3011	Impeller Dia: 11.0"	Speed: Variable	Solids Size: 0.88"	Curve #A943HQ
---------------	---------------------	-----------------	--------------------	---------------

